



DESCRIPTION

Pole mount adaptor, constructed from AISI 316L sheet steel. Suitable for NXWBS1, NXWBL and NXWBPTH1 brackets.

TECHNICAL DATA

MECHANICAL

Suitable for NXWBS1, NXWBL, NXWBPTH1
 Made of AISI 316L electropolished stainless steel
 For pole diameters 110-150mm (4.3-5.9in)
 Load rating: 50kg (110lb)
 Unit weight: 3.3kg (7.3lb)

PART NUMBER

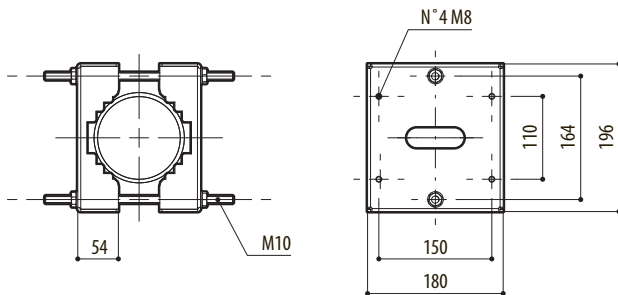
NXCOL AISI 316L stainless steel pole adapter module

PACKAGE

Model Number	Weight	Dimensions (WxHxL)	Master carton
NXCOL	3.5kg (7.7lb)	14x25.5x20cm (5.5x10x7.9in)	8

TECHNICAL DRAWINGS

The indicated measurements are expressed in millimetres.



NXCOL